



Government of India
Ministry of Earth Sciences
India Meteorological Department



Press Release
Date: 17th September, 2025
Time of Issue: 1315 hours IST

Subject: Heavy to very heavy rainfall likely to continue over East Uttar Pradesh, Bihar, Sub-Himalayan West Bengal & Sikkim and Arunachal Pradesh today, the 17th September, 2025.

Realised weather during past 24 hours till 0830 hours IST of today, the 17th September, 2025:

- ❖ **Heavy to very heavy rainfall with Extremely heavy rainfall (≥ 21 cm)** has been recorded at isolated places over Bihar.
 - ❖ **Very heavy rainfall (12-20 cm)** has been recorded at isolated places over Uttarakhand, Sub-Himalayan West Bengal & Sikkim, West Madhya Pradesh, Arunachal Pradesh, Meghalaya and Tamil Nadu.
 - ❖ **Heavy rainfall (7-11 cm)** has been recorded at isolated places over Uttar Pradesh, East Madhya Pradesh, Vidarbha, Chhattisgarh, Gangetic West Bengal, Odisha, Jharkhand, Assam, Konkan, Madhya Maharashtra, Marathwada, North Interior Karnataka, Telangana, Coastal Andhra Pradesh and Rayalaseema.
- For more details of realised weather, kindly refer [Annexure I](#).**

Withdrawal of southwest Monsoon:

- ❖ The line of withdrawal of southwest monsoon now passes through 31°N/74°E, Bhatinda, Fatehabad, Pilani, Ajmer, Deesa, Bhuj and 23°N/68°E. ([Annexure II](#))

i. Weather Systems, Forecast and Warnings (refer to [Annexure III & IV](#)):

- ❖ An upper air **cyclonic circulation** lies over East Uttar Pradesh & adjoining Bihar and another over central Assam in lower tropospheric levels.
- ❖ An upper air **cyclonic circulation** lies over Marathwada in lower & middle tropospheric levels.
- ❖ A north-south **trough** runs from South Interior Karnataka to Comorin area in lower tropospheric levels.
- ❖ A **trough** runs from central parts of Madhya Pradesh to westcentral & adjoining southwest Bay of Bengal in lower tropospheric levels.

Under the influence of these systems, the following weather is likely:

East & Central India:

- ❖ Light to moderate rain/thunderstorm at most/many places with isolated **heavy rainfall** likely over Jharkhand, Vidarbha & Chhattisgarh on 17th; Sub-Himalayan West Bengal & Sikkim during 17th-19th; Bihar during 17th-20th; Andaman & Nicobar Islands during 18th-21st September with isolated **very heavy falls over Bihar, Sub-Himalayan West Bengal & Sikkim on 17th September**.
- ❖ Thunderstorm & gusty winds (speed reaching 30-40 kmph) very likely over East India during next 5-6 days.

Northeast India:

- ❖ Light/moderate rain/thunderstorm at many/some places with isolated **heavy rainfall** likely over Arunachal Pradesh during 17th-19th; Assam & Meghalaya during 17th-23rd and Nagaland, Manipur, Mizoram & Tripura during 19th-23rd September with isolated **very heavy falls over Arunachal Pradesh on 17th September**.

Northwest India:

- ❖ Light to moderate rain/thunderstorm at some/isolated places with **isolated heavy rainfall** likely over Uttarakhand & East Uttar Pradesh on 17th & 18th and tarai region of Northwest Uttar Pradesh on 17th September.

South Peninsular India:

- ❖ Light to moderate rain/thunderstorm at many/some places with isolated **heavy rainfall** likely over Tamil Nadu during 17th-19th; Kerala & Mahe, Coastal Andhra Pradesh & Yanam, Rayalaseema, Coastal & South Interior Karnataka on 17th & 18th; Telangana, North Interior Karnataka on 17th September.
- ❖ Strong surface winds (speed reaching 30-40 kmph) very likely over Telangana, Coastal Andhra Pradesh & Yanam and Rayalaseema during next 5 days.

West India:

- ❖ Light to moderate rain/thunderstorm at many/some places likely over the region during next 4 days with **isolated heavy rainfall** likely over Marathawada on 17th; Konkan & Goa and Madhya Maharashtra on 17th & 18th September.

Fishermen warning:

Fishermen are advised not to venture into the following areas during 17th to 22nd September:

Arabian Sea (AS):

- Some parts of westcentral, southwest Arabian Sea, along and off Somalia coast during 17th to 22nd September, along and off Oman & adjoining Yemen coasts during on 17th September; along and off north Oman & adjoining sea areas during 18th to 21st; along and off south Konkan, Goa coasts, adjoining sea area during 17th to 19th September.

Bay of Bengal (BoB):

- Along and off south Sri Lanka coast and adjoining some parts of southwest Bay of Bengal during 17th & 19th September & along and off south Sri Lanka coast during 17th to 20th September; many parts of south Bay of Bengal, along and & off Sri Lanka coast during 20th to 22nd; Gulf of Mannar & adjoining Comorin area during 17th to 21st; over Andaman Sea during 17th to 22nd September.

ii. Weather conditions and forecast over Delhi/NCR during 17th September to 20th September, 2025 (Annexure V)

For more details, kindly refer National Weather Bulletin:

https://mausam.imd.gov.in/responsive/all_india_forecast_bulletin.php

For District wise warnings refer: <https://mausam.imd.gov.in/responsive/districtWiseWarningGIS.php>

For Fishermen warning refer <https://rsmcnewdelhi.imd.gov.in/fishermen-warning.php>

Rainfall recorded (in cm) during past 24 hours till 0830 hours IST of today, the 17th September (≥ 7 cm):

- ❖ **Bihar:** Khagadia (dist Khagaria) 22, Mansi (dist Khagaria) 19, Dumraon (dist Buxar) 14, Tribeni/balmikinagar (dist West Champaran) 12, Baltara (dist Khagaria) 12, Alauli (dist Khagaria) 11, Barahar Kothi (dist Purnea) 9, Rafiganj (dist Aurangabad) 9, Chautham (dist Khagaria) 9, Jhajha (dist Jamui) 9, Gogri (dist Khagaria) 9, Saulighat (dist Madhubani) 8, Sono (dist Jamui) 8, Tekari (dist Gaya) 8, Bakhtiarpur (dist Patna) 8, Kusheswarstan (dist Darbhanga) 8, Guraru (dist Gaya) 7, Sadar Munger (dist Monghyr) 7, Athmalgola (dist Patna) 7, Bagaha (dist West Champaran) 7, Dhamdaha (dist Purnea) 7, Monghyr (dist Monghyr) 7;
- ❖ **Tamil Nadu, Puducherry & Karaikal:** Sriperumbudur (dist Kancheepuram) 18; Ennore AWS (dist Tiruvallur) 9; Dgp Office (dist Chennai), Thiruvidaimaruthur (dist Thanjavur) 8 Each; Jaya Engg College AWS (dist Tiruvallur), Gangavalli (dist Salem), Minnal (dist Ranipet) 7 Each;
- ❖ **West Madhya Pradesh:** Khaknar (dist Burhanpur) 16, Burhanpur (dist Burhanpur) 12, Neapanagar (dist Burhanpur) 10, Roan (dist Bhind) 9, Mihona (dist Bhind) 9, Bhimpur (dist Betul) 7, Khategaon (dist Dewas) 7, Khandwa (dist Khandwa) 7;
- ❖ **Uttarakhand:** Roshnabad (dist Hardwar) 15, Hardwar (dist Hardwar) 13;
- ❖ **Arunachal Pradesh:** Pasighat (dist East Siang) 14, Miao (dist Changlang) 9;
- ❖ **Assam & Meghalaya:** Williamnagar (dist East Garo Hills) 12, N.lakhimpur/lilabari (dist Lakhimpur) 11, Cherrapunji (dist East Khasi Hills) 9, Lakhimpur Arg (dist Lakhimpur) 8, Williamnagar_ Aws (dist East Garo Hills) 7, Mawsynram (dist East Khasi Hills) 7, Shillong_ Aws (dist East Khasi Hills) 7, Mawkyrwat (dist South West Khasi Hills) 7;
- ❖ **Sub-Himalayan West Bengal & Sikkim:** Ghughumari (dist Cooch Behar) 12, Damdim Tea Estate (dist Jalpaiguri) 9, Aryaman Tea Estate (dist Alipurduar) 7, Baradighi T.e. (dist Jalpaiguri) 7;
- ❖ **Telangana:** Shankarapatnam (dist Karimnagar) 11;
- ❖ **Rayalaseema:** Pakala (dist Tirupati) 10, Chapad (dist Ysr District) 8;
- ❖ **North Interior Karnataka:** Zalki Cross (dist Vijayapura) 10, Sindgi (dist Vijayapura) 8, Manthala (dist Bidar) 7;
- ❖ **West Uttar Pradesh:** Nagina (dist Bijnor) 9, Najibabad (t) (dist Bijnor) 9, Aligarh (dist Aligarh) 8, Sambhal (dist Sambhal) 7;
- ❖ **East Madhya Pradesh:** Pandhurna (dist Chindwara) 9, Tamia (dist Chindwara) 7;
- ❖ **Gangetic West Bengal:** Mankar (dist Purba Bardhaman) 8;
- ❖ **Chhattisgarh:** Ramanujganj (dist Balrampur) 8;
- ❖ **East Uttar Pradesh:** Ballia Obsy (dist Ballia) 8;
- ❖ **Vidarbha:** Kharangha (dist Wardha) 8, Jalgaon Jamod (dist Buldhana) 7;
- ❖ **Jharkhand:** Untari road (dist Palamu) 8, Sisai (dist Gumla) 7;
- ❖ **Coastal Andhra Pradesh:** Seetharamapuram (dist Spsr Nellore) 7, Podili (dist Prakasam) 7, Bheemavaram (dist West Godavari) 7;
- ❖ **Konkan:** Kudal (dist Sindhudurg) 7, Kankavli (dist Sindhudurg) 7;
- ❖ **Madhya Maharashtra:** Muktainagar / Edalabad (dist Jalgaon) 7, Jamner (dist Jalgaon) 7;
- ❖ **Marathawada:** Bhum (dist Dharashiv) 7, Vaijapur (dist Chh. Sambhajinagar) 7, AUSA (dist Latur) 7;
- ❖ **Odisha:** Bhuban (dist Dhenkanal) 7, Tikabali (dist Kandhamal) 7, Nawana (dist Mayurbhanj) 7

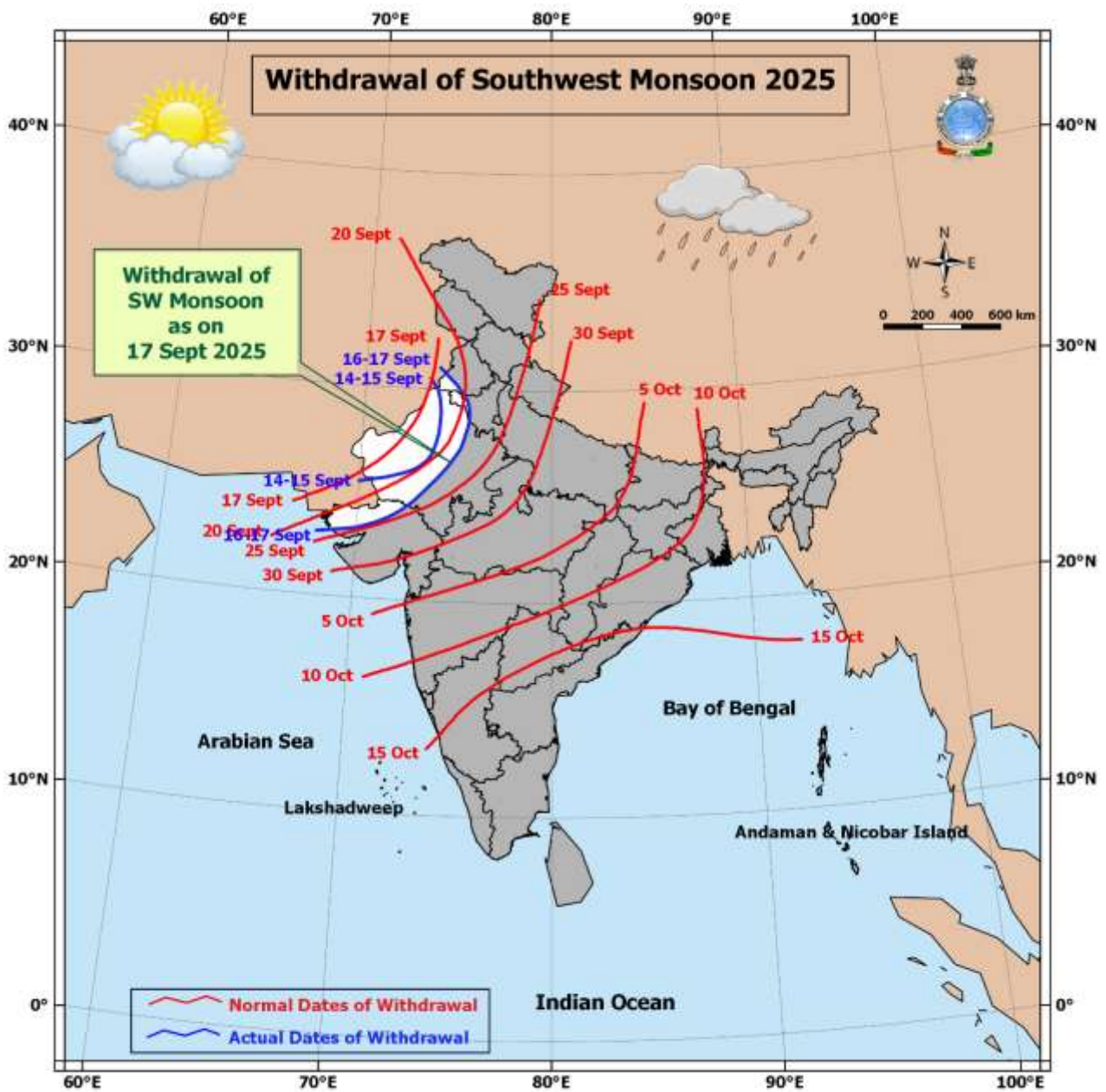
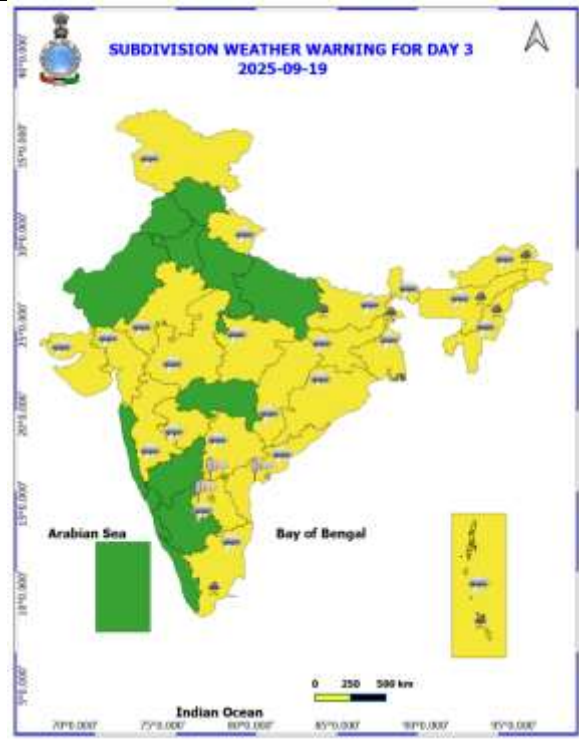
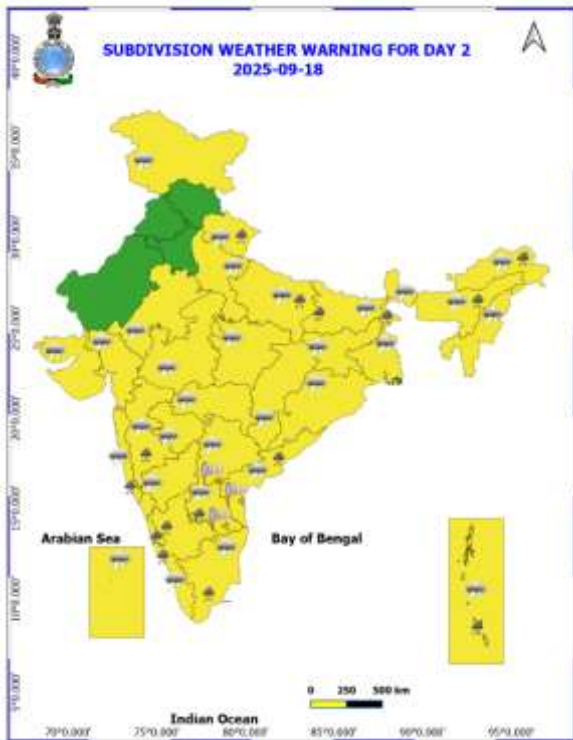
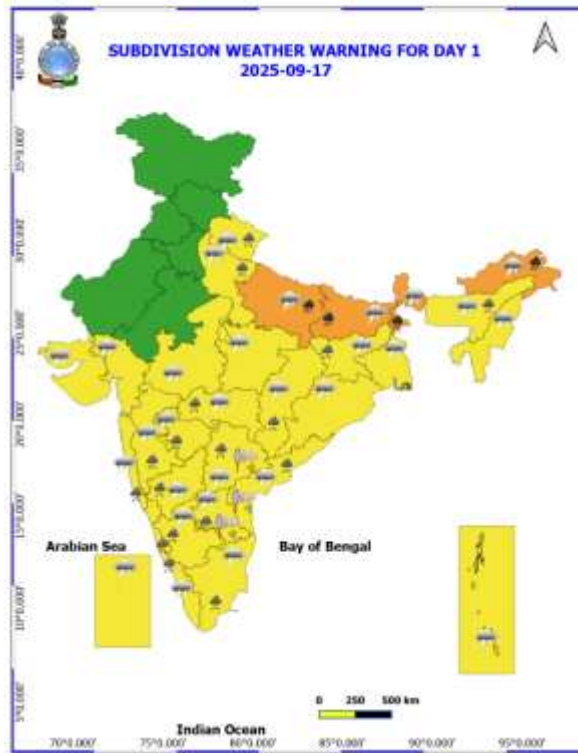
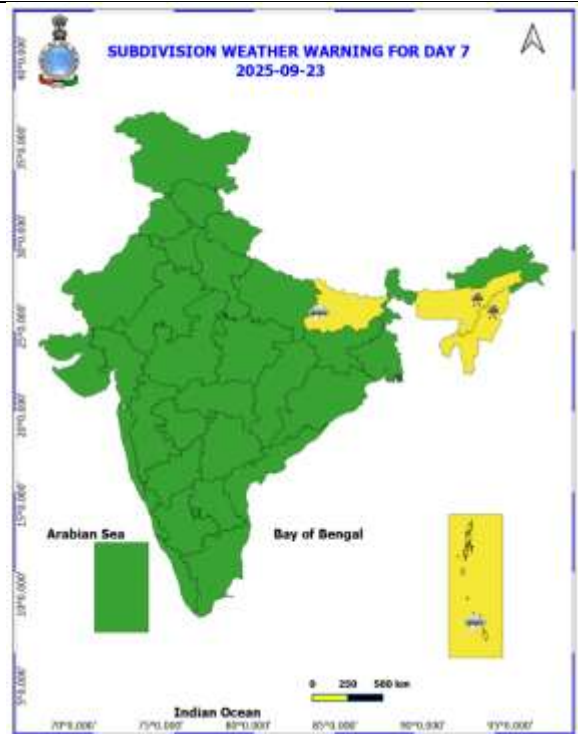
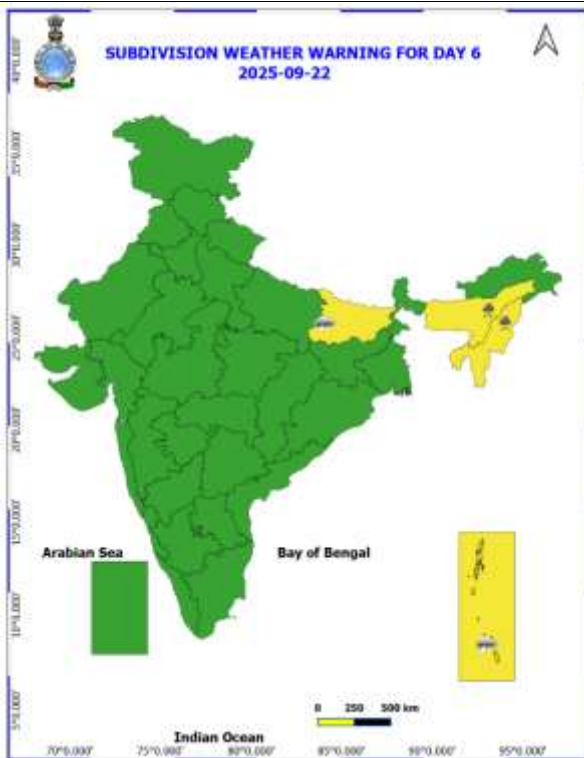
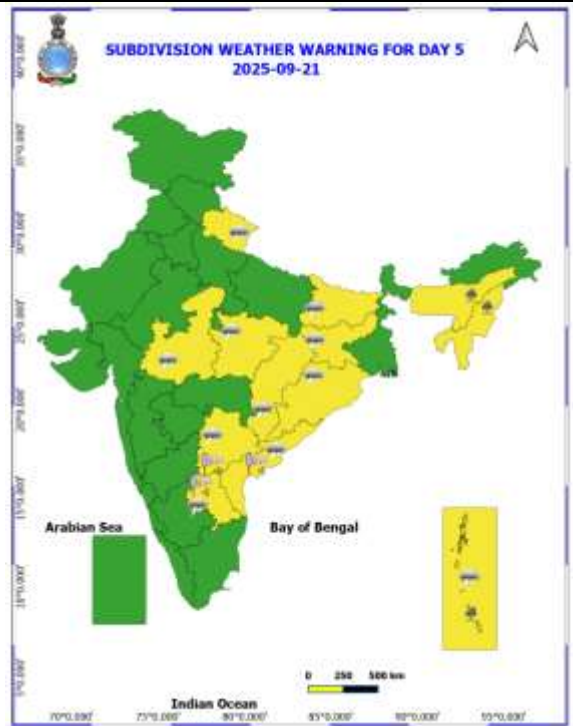
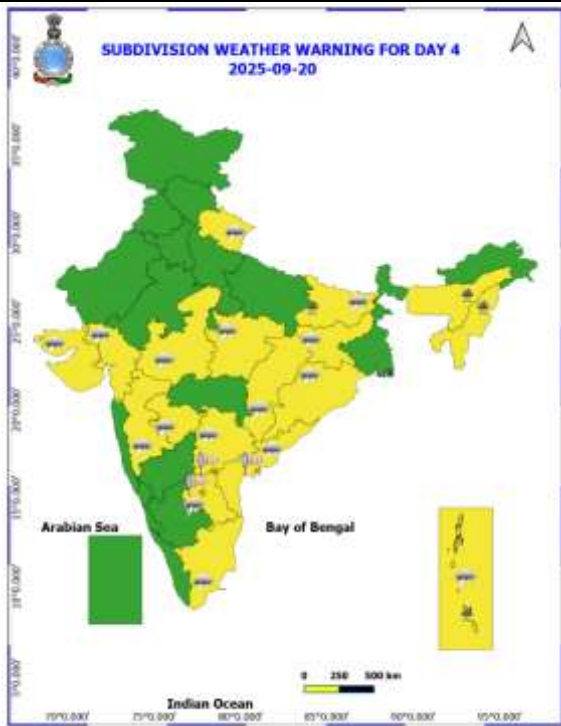


Table-1								
7 Days Rainfall Forecast								
S.No.	Subdivision	17- Sep	18- Sep	19- Sep	20- Sep	21- Sep	22- Sep	23- Sep
		Day 1	Day 2	Day 3	Day 4	Day 5	Day 6	Day 7
1	ANDAMAN & NICOBAR ISLANDS	FWS	FWS	FWS	FWS	FWS	FWS	FWS
2	ARUNACHAL PRADESH	FWS	SCT	SCT	SCT	SCT	SCT	SCT
3	ASSAM & MEHGHALAYA	FWS	FWS	FWS	FWS	FWS	FWS	SCT
4	NAGALAND, MANIPUR, MIZORAM AND TRIPURA	FWS	FWS	FWS	FWS	FWS	FWS	FWS
5	SUB HIMALAYAN WEST BENGAL & SIKKIM	FWS	FWS	FWS	FWS	FWS	FWS	FWS
6	GANGETIC WEST BENGAL	FWS	FWS	FWS	SCT	SCT	SCT	SCT
7	ODISHA	ISOL	ISOL	ISOL	SCT	SCT	ISOL	ISOL
8	JHARKHAND	FWS	FWS	FWS	FWS	SCT	SCT	SCT
9	BIHAR	FWS	FWS	SCT	FWS	FWS	SCT	SCT
10	EAST UTTAR PRADESH	FWS	FWS	SCT	ISOL	ISOL	ISOL	ISOL
11	WEST UTTAR PRADESH	SCT	SCT	ISOL	DRY	DRY	DRY	DRY
12	UTTARAKHAND	FWS	FWS	SCT	SCT	SCT	SCT	SCT
13	HARYANA, CHANDIGARH & DELHI	ISOL	SCT	SCT	DRY	DRY	DRY	DRY
14	PUNJAB	ISOL	SCT	SCT	DRY	DRY	DRY	DRY
15	HIMACHAL PRADESH	SCT	SCT	ISOL	ISOL	ISOL	ISOL	ISOL
16	JAMMU AND KASHMIR AND LADAKH	ISOL	SCT	SCT	DRY	DRY	DRY	DRY
17	WEST RAJASTHAN	DRY	DRY	DRY	DRY	DRY	DRY	DRY
18	EAST RAJASTHAN	ISOL	ISOL	ISOL	ISOL	ISOL	DRY	DRY
19	WEST MADHYA PRADESH	SCT	FWS	FWS	SCT	SCT	SCT	SCT
20	EAST MADHYA PRADESH	SCT	FWS	FWS	FWS	SCT	SCT	SCT
21	GUJRAT REGION	SCT	SCT	SCT	SCT	SCT	SCT	SCT
22	SAURASHTRA & KUTCH	ISOL	ISOL	ISOL	ISOL	ISOL	ISOL	ISOL
23	KONKAN & GOA	FWS	FWS	FWS	FWS	FWS	FWS	FWS
24	MADHYA MAHARASHTRA	FWS	SCT	SCT	ISOL	ISOL	SCT	ISOL
25	MARATHWADA	FWS	SCT	SCT	SCT	SCT	SCT	SCT
26	VIDARBHA	FWS	FWS	FWS	FWS	FWS	FWS	FWS
27	CHHATTISGARH	FWS	SCT	SCT	SCT	FWS	FWS	FWS
28	COASTAL ANDHRA PRADESH	SCT	SCT	SCT	SCT	SCT	SCT	SCT
29	TELANGANA	FWS	SCT	SCT	SCT	SCT	SCT	SCT
30	RAYALASEEMA	FWS	FWS	SCT	SCT	SCT	SCT	SCT
31	TAMILNADU & PUDUCHERRY	FWS	FWS	FWS	ISOL	ISOL	ISOL	ISOL
32	COSTAL KARNATAKA	FWS	FWS	FWS	FWS	FWS	FWS	FWS
33	NORTH INTERIOR KARNATAKA	FWS	FWS	SCT	SCT	SCT	FWS	FWS
34	SOUTH INTERIOR KARNATAKA	FWS	FWS	SCT	SCT	SCT	FWS	FWS
35	KERALA AND MAHE	FWS	FWS	FWS	SCT	SCT	SCT	SCT
36	LAKSHADWEEP	FWS	FWS	FWS	SCT	SCT	SCT	SCT

- As the lead period increases forecast accuracy decrease.





- Action may be taken based on ORANGE AND REDCOLOUR warnings.
- Vulnerable regions likely urban and hilly areas action may be initiated for heavy rainfall warning.
- As the lead period increases forecast accuracy decreases.

Detailed districtwise Multi Hazard weather warning for next five days available at <https://mausam.imd.gov.in/responsive/districtWiseWarningGIS.php>

Weather forecast over Delhi/NCR during 17th to 20th September 2025**Past Weather:**

There has been rise in the minimum temperature up to 1°C and no large change in maximum temperature over Delhi/NCR during the past 24 hours. The maximum and minimum temperatures over Delhi were around 34 to 36°C and 24 to 26°C respectively. The minimum and maximum temperatures were near normal. Partly cloudy sky conditions with predominant surface wind from the southwest/northeast direction with wind speeds up to 12 kmph prevailed during the past 24 hours. Partly cloudy sky conditions with a wind speed of less than 10 kmph from the southwest direction prevailed over the region in the forenoon today.

Weather Forecast:

17.09.2025: Partly cloudy sky. Possibility of very light to light rain likely at isolated places. The maximum and minimum temperatures over Delhi are likely to be in the range of 34 to 36°C. The maximum temperature will be above normal up to 1 to 2°C. The predominant surface wind will likely to be from the southeast direction with a wind speed of up to 10-15 kmph during afternoon hours. The wind speed will increase becoming less than 25 kmph from the southeast direction during the evening and night.

18.09.2025: Partly cloudy sky. Possibility of very light to light rain likely at few places. The maximum and minimum temperatures over Delhi are likely to be in the range of 34 to 36°C and 24 to 26°C respectively. The minimum temperature will be near normal and the maximum temperature will be above normal up to 1 to 2°C. The predominant surface wind will likely to be from the southwest direction with a wind speed of up to 08-12 kmph during morning hours. The wind speed will gradually increase becoming less than 15 kmph from the northeast direction in the afternoon. The wind speed will decrease becoming less than 12 kmph from the southeast direction during the evening and night.

19.09.2025: Partly cloudy sky. Possibility of very light to light rain likely at isolated places. The maximum and minimum temperatures over Delhi are likely to be in the range of 33 to 35°C and 23 to 25°C respectively. The minimum temperature will be below normal up to 1 - 2°C and the maximum temperature will be near normal. The predominant surface wind will likely to be from the southeast direction with a wind speed of up to 10-15 kmph during morning hours. The wind speed will gradually increase becoming less than 25 kmph from the northwest direction in the afternoon. The wind speed will decrease becoming less than 10 kmph from the northeast direction during the evening and night.

20.09.2025: Partly cloudy sky. The maximum and minimum temperatures over Delhi are likely to be in the range of 34 to 36°C and 24 to 26°C respectively. The minimum temperature will be near normal and the maximum temperature will be below normal up to 1 - 2°C. The predominant surface wind will likely to be from the northwest direction with a wind speed of up to 10-15 kmph during morning hours. The wind speed will gradually increase becoming less than 25 kmph from the northwest direction in the afternoon. The wind speed will decrease becoming less than 15 kmph from the northeast direction during the evening and night.

Impact & Action Suggested due to

- ❖ **Heavy to very heavy rainfall (12-20 cm)** at isolated places over Bihar, Sub-Himalayan West Bengal & Sikkim and Arunachal Pradesh on 17th September.

Impact Expected

- Localized Flooding of roads, water logging in low lying areas and closure of underpasses mainly in urban areas of the above region.
- Occasional reduction in visibility due to heavy rainfall.
- Disruption of traffic in major cities due to water logging in roads leading to increased travel time.
- Minor damage to kutchha roads.
- Possibilities of damage to vulnerable structure.
- Localized Landslides/Mudslides/landslips/mudslips/landsinks/mudsinks.
- Damage to horticulture and standing crops in some areas due to inundation.
- It may lead to riverine flooding in some river catchments (for riverine flooding please visit Web page of CWC)

Action Suggested

- Check for traffic congestion on your route before leaving for your destination.
- Follow any traffic advisories that are issued in this regard.
- Avoid going to areas that face the water logging problems often.
- Avoid staying in vulnerable structure.

Agromet advisories for likely impact of Heavy / Heavy to Very Heavy Rainfall

- In Maharashtra, drain out excess water from fields of rice, vegetables and fruit orchards in Konkan; rice, sugarcane, pigeon pea, soybean, maize, vegetables and fruit orchards in Madhya Maharashtra; sugarcane, sorghum, soybean, turmeric, vegetables and fruit orchards in Marathwada and pigeon pea, cotton, soybean, maize, vegetables and fruit orchards in Vidarbha.
- In Sub-Himalayan West Bengal, drain out excess water from the fields of *rice* and vegetable in Terai Zone and green gram, black gram, finger millet, dalley khorsani, vegetables and fruit orchards in Hill Zone.
- In Bihar, ensure proper drainage of excess rainwater from the fields of rice and vegetables in North West Alluvial Plain Zone.
- In Arunachal Pradesh, maintain proper drainage in standing crops such as rice, soybean, finger millet, vegetables and fruit orchards to avoid water stagnation. Keep the harvested produce of upland paddy, maize, chillies and banana at safer places.
- In Assam, ensure proper drainage to drain out excess water from the fields of rice, sugarcane, black gram and sesame in Hill Zone; rice and already sown black gram in Barak Valley Zone and rice, sesame and vegetables in North Bank Plain Zone. In Lower Brahmaputra Valley Zone, ensure proper drainage system in *Sali* rice fields and nursery bed of vegetables. Cover the nursery bed with thin polythene to avoid the damages due to heavy rainfall. In Upper Brahmaputra Valley Zone, harvest the matured vegetables and fruits and transfer it to a safer location and make arrangements to drain out excess water from the standing crop fields.
- In Meghalaya, drain out excess water from rice, vegetable nurseries and ginger. Provide support to tall and fragile crops like banana, papaya, pumpkin, etc. to prevent lodging.
- In Uttarakhand, ensure proper drainage in the fields of green gram, black gram, soybean, barnyard millet and finger millet in Sub Humid Sub Tropic Zone; and rice, pigeon pea, black gram, green gram, finger millet, maize, soybean and already sown crop of potato and radish in Bhabar and Tarai Zone. In Hill Zone, ensure proper drainage in pigeon pea and vegetable crops and keep the harvestewd produce of barnyard millet, ginger and rainfed rice at safer places.
- In Telangana, ensure adequate drainage facilities to drain out excess rain water in fields of rice, maize, cotton, soybean, pigeon pea, turmeric and vegetables.

Livestock / Fishery

- Keep the animals inside the shed during heavy rainfall and provide them balanced feed.
- Store feed and fodder in a safe place to prevent spoilage.
- Construct an outlet with proper netting around the ponds to drain out excess water, thereby preventing fish from escaping in case of overflow.

Agromet advisories for likely impact of Thunderstorm / Gusty Winds / Squally Winds

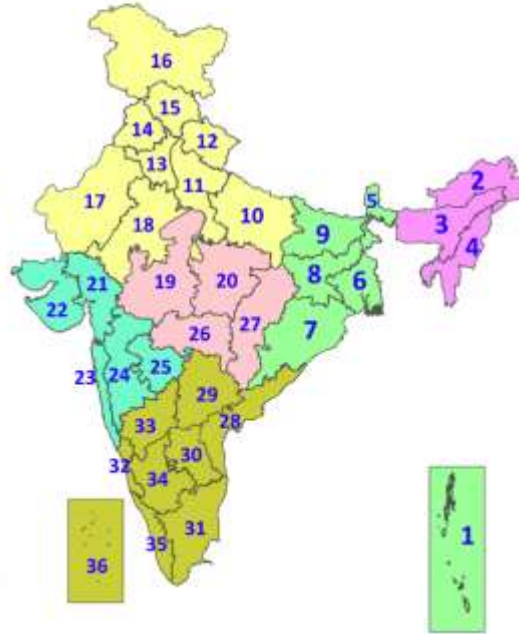
- Provide mechanical support to horticultural crops and staking or support to vegetables and young fruit plants / fruit-bearing plants to avoid lodging due to strong winds.

Legends & abbreviations:

- ❖ **Heavy Rain:**64.5-115.5mm; **Very Heavy Rain:**115.6-204.4mm; **Extremely Heavy Rain:** >204.4mm.
- ❖ **Obsy:** Observatory; Automatic Weather Station; **ARG:** Automatic Rain Gauge; **dist:** District; **NH:** National Highway; **KVK:** Krishi Vigyan Kendra; **DVC:** Damodar Valley Corporation; **PTO:** Part Time Office, **Aero:** Aerodrome, **IAF:** Indian Air Force.
- ❖ **Region wise classification of meteorological Sub-Divisions:**
 - **Northwest India:** Western Himalayan Region (Jammu-Kashmir-Ladakh-Gilgit-Baltistan-Muzaffarabad, Himachal Pradesh and Uttarakhand); Punjab, Haryana-Chandigarh-Delhi; West Uttar Pradesh, East Uttar Pradesh, West Rajasthan and East Rajasthan.
 - **Central India:** West Madhya Pradesh, East Madhya Pradesh, Vidarbha and Chhattisgarh.
 - **East India:** Bihar, Jharkhand, Sub-Himalayan West Bengal & Sikkim; Gangetic West Bengal, Odisha and Andaman & Nicobar Islands.
 - **Northeast India:** Arunachal Pradesh, Assam & Meghalaya and Nagaland, Manipur, Mizoram & Tripura.
 - **West India:** Gujarat Region, Saurashtra & Kutch, Konkan & Goa, Madhya Maharashtra and Marathawada.
 - **South India:** Coastal Andhra Pradesh & Yanam, Telangana, Rayalaseema, Coastal Karnataka, North Interior Karnataka, South Interior Karnataka, Kerala & Mahe, Tamil Nadu, Puducherry & Karaikal and Lakshadweep.

LEGENDS

1. अंडमान और निकोबार द्वीपसमूह
2. अरुणाचल प्रदेश
3. असम और मेघालय
4. नागालैंड, मणिपुर, मिजोरम और त्रिपुरा
5. उप-हिमालयी पश्चिम बंगाल और सिक्किम
6. गंगीय पश्चिम बंगाल
7. ओडिशा
8. झारखंड
9. बिहार
10. पूर्वी उत्तर प्रदेश
11. पश्चिम उत्तर प्रदेश
12. उत्तराखंड
13. हरियाणा, चंडीगढ़ और दिल्ली
14. पंजाब
15. हिमाचल प्रदेश
16. जम्मू और कश्मीर और लद्दाख
17. पश्चिम राजस्थान
18. पूर्वी राजस्थान
19. पश्चिम मध्य प्रदेश
20. पूर्वी मध्य प्रदेश
21. गुजरात
22. सौराष्ट्र
23. कोंकण और गोवा
24. मध्य महाराष्ट्र
25. मराठवाड़ा
26. विदर्भ
27. छत्तीसगढ़
28. तटीय आंध्र प्रदेश और यनम
29. तेलंगाना
30. रायलसीमा
31. तमिलनाडु, पुडुचेरी और कराईकल
32. तटीय कर्नाटक
33. आंतरिक उत्तरी कर्नाटक
34. आंतरिक दक्षिणी कर्नाटक
35. केरल और माहे
36. लक्षद्वीप



1. Andaman & Nicobar Islands
2. Arunachal Pradesh
3. Assam & Meghalaya
4. Nagaland, Manipur, Mizoram & Tripura
5. Sub-Himalayan West Bengal & Sikkim
6. Gangetic West Bengal
7. Odisha
8. Jharkhand
9. Bihar
10. East Uttar Pradesh
11. West Uttar Pradesh
12. Uttarakhand
13. Haryana, Chandigarh & Delhi
14. Punjab
15. Himachal Pradesh
16. Jammu & Kashmir and Ladakh
17. West Rajasthan
18. East Rajasthan
19. West Madhya Pradesh
20. East Madhya Pradesh
21. Gujarat
22. Saurashtra
23. Konkan & Goa
24. Madhya Maharashtra
25. Marathwada
26. Vidarbha
27. Chhattisgarh
28. Coastal Andhra Pradesh & Yanam
29. Telangana
30. Rayalaseema
31. Tamilnadu, Puducherry & Karaikal
32. Coastal Karnataka
33. North Interior Karnataka
34. South Interior Karnataka
35. Kerala & Mahe
36. Lakshadweep

SPATIAL DISTRIBUTION (% of Stations reporting)

% Stations	Category	% Stations	Category
76-100	Widespread (WS/Most Places)	26-50	Scattered (SCT/A Few Places)
51-75	Fairly Widespread (FWS/Many Places)	1-25	Isolated (ISOL)

- | | | |
|----------------------|-------------|----------------------|
| Fog | Heavy Snow | Cold Wave |
| Heavy Rain | Dust Storm | Cold Day |
| Very Heavy Rain | Heat Wave | Ground Frost |
| Extremely Heavy Rain | Warm Night | Hot Day |
| Thunder & Lightning | Hot & Humid | Strong Surface Winds |
| Hailstorm | | |
| Dust Raising Winds | | |

COLOUR CODED WARNING

No Warning (No Action)
Watch (Be Aware)
Alert (Be Prepared To Take Action)
Warning (Take Action)

Probabilistic Forecast

Terms	Probability of Occurrence (%)
Unlikely	< 25
Likely	25 - 50
Very Likely	50 - 75
Most Likely	> 75

* Red colour warning does not mean "Red Alert", Red colour warning means "Take Action".
Forecast and Warning for any day is valid from 0830 hours IST of day till 0830 hours IST of next day.
For more details, kindly visit <https://mausam.imd.gov.in> or contact: 011-2434-4599
(Service to the Nation since 1875)

DEFINITION/CRITERIA

Rain/ Snow *	<p>Heavy: 64.5 to 115.5 mm/cm *</p> <p>Very Heavy: 115.6 to 204.4 mm/cm*</p> <p>Extremely Heavy: > 204.4 mm/cm *</p>
Heat Wave	<p>When maximum temperature of a station reaches $\geq 40^{\circ}\text{C}$ for plains and $\geq 30^{\circ}\text{C}$ for hilly regions</p> <p>(a) Based on Departure from normal</p> <p>Heat Wave: Maximum Temperature Departure from normal 4.5°C to 6.4°C.</p> <p>Severe Heat Wave: Maximum Temperature Departure from normal $\geq 6.5^{\circ}\text{C}$</p> <p>(b) Based on Actual maximum temperature</p> <p>Heat Wave: When actual maximum temperature $\geq 45^{\circ}\text{C}$.</p> <p>Severe Heat Wave: When actual maximum temperature $\geq 47^{\circ}\text{C}$</p> <p>(c) Criteria for heat wave for coastal stations</p> <p>When maximum temperature departure is $> 4.5^{\circ}\text{C}$ from normal. Heat Wave may be described provided maximum temperature $\geq 37^{\circ}\text{C}$.</p>
Warm Night	<p>When maximum temperature remains 40°C</p> <p>Warm Night: When minimum temperature departure 4.5°C to 6.4°C.</p> <p>Severe Warm Night: When minimum temperature departure $> 6.4^{\circ}\text{C}$.</p>
Cold Wave	<p>When minimum temperature of a station $\leq 10^{\circ}\text{C}$ for plains and $\leq 0^{\circ}\text{C}$ for hilly regions.</p> <p>(a) Based on departure</p> <p>Cold Wave: Minimum Temperature Departure from normal -4.5°C to -6.4°C.</p> <p>Severe Cold Wave: Minimum Temperature Departure from normal $\leq -6.5^{\circ}\text{C}$</p> <p>(b) Based on actual Minimum Temperature (for Plains only)</p> <p>Cold Wave : When Minimum Temperature is $\leq 4.0^{\circ}\text{C}$</p> <p>Severe Cold Wave: When Minimum Temperature is $\leq 2.0^{\circ}\text{C}$</p> <p>(c) For Coastal Stations</p> <p>When Minimum Temperature departure is $\leq -4.5^{\circ}\text{C}$ & actual Minimum Temperature is $\leq 15^{\circ}\text{C}$</p>
Cold Day	<p>When minimum temperature of a station $\leq 10^{\circ}\text{C}$ for plains and $\leq 0^{\circ}\text{C}$ for hilly regions</p> <p>Based on departure</p> <p>Cold Day: Maximum Temperature Departure from normal -4.5°C to -6.4°C.</p> <p>Severe Cold Day: Maximum Temperature Departure from normal $\leq -6.5^{\circ}\text{C}$</p>
Fog	<p>Phenomenon of small droplets suspended in air and the horizontal visibility $< 1\text{km}$</p> <p>Moderate Fog: When the visibility between 500-200 metres</p> <p>Dense Fog: when the visibility between 50- 200 metres</p> <p>Very Dense Fog: when the visibility < 50 metres</p>
Thunderstorm	<p>Sudden electrical discharges manifested by a flash of light (Lightning) and a sharp rumbling sound (thunder)</p>
Dust/Sand Storm	<p>An ensemble of particles of dust or sand energetically lifted to great heights by a strong and turbulent wind.</p>
Frost	<p>Ice deposits on ground</p> <p>Air temperature $\leq 4^{\circ}\text{C}$ (over Plains)</p>
Squall	<p>A strong wind that rises suddenly, lasts for atleast 1 minute.</p> <p>Moderate: Wind speed 52-61 kmph</p> <p>Severe: Wind speed 62-67 kmph</p> <p>Very Severe: Wind speed > 67 kmph</p>
Sea State	<p>Effect of various waves in the sea over specific area</p> <p>Rough to very rough: Wind speed 41-62 kmph (22-33 knots) & Wave height 2.5-6 metre</p> <p>High to very high: Wind speed 63-117 kmph (34-63 knots) & Wave height 6-14 metre</p> <p>Phenomenal: Wind speed > 117 kmph (> 63 knots) & Wave height > 14 metre</p>
Cyclone	<p>Cyclonic Storm: Wind speed 62-67 kmph (34-47 knots)</p> <p>Severe Cyclonic Storm: Wind speed 88-117 kmph (48-63 knots)</p> <p>Very Severe Cyclonic Storm: Wind speed 118-165 kmph (64 - 89 knots)</p> <p>Extremely Severe Cyclonic Storm: Wind speed 166-220 kmph (90 -119 knots)</p> <p>Super Cyclone Storm: Wind speed > 220 kmph (> 119 knots)</p>

* Red colour warning does not mean "Red Alert", Red colour warning means "Take Action".
Forecast and Warning for any day is valid from 0830 hours IST of day till 0830 hours IST of next day.
For more details, kindly visit <https://mausam.imd.gov.in> or contact: 011-2434-4599
(Service to the Nation since 1875)

Hot and Humid: When maximum temperatures remain 3°C above normal along with the above normal relative humidity.